

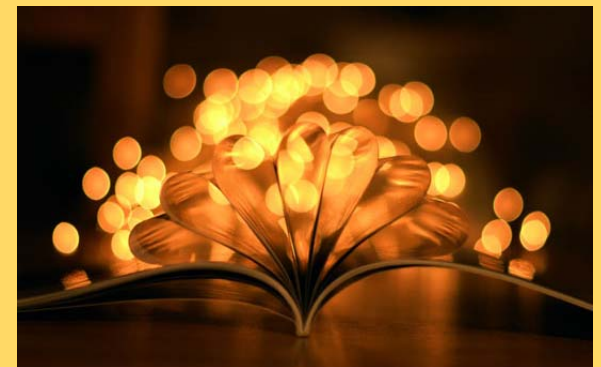
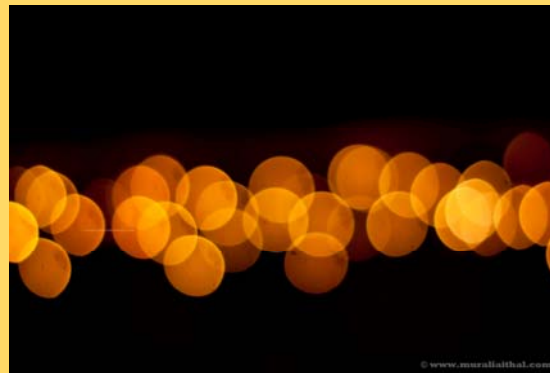


Bokeh Lighting

By Hannah Thomas

What Is Bokeh?

Bokeh lighting occurs in the areas of the photo that are out of the depth of field and is how the lens renders these areas. It mostly occurs in the areas of highlighting and although most of the time it is unpleasant in an image, highlighted mostly by judges as a burnt out horror, it can also be used to create an artistic pleasant effect.



My first Go

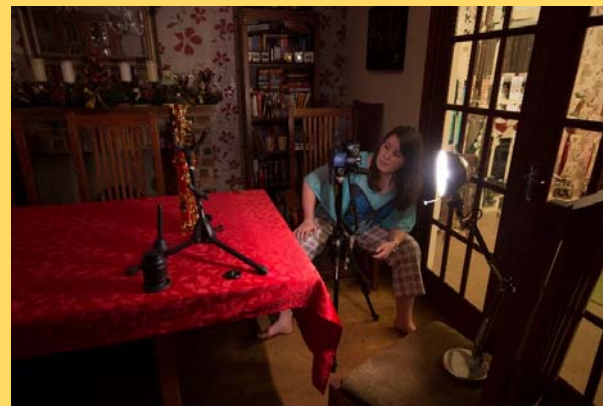
I first had a go creating bokeh lighting with my saxophone as lighting on this would create many highlights. To create them I used a shallow depth of field and bright lighting. Here are some of my results.



A more creative approach



What I did



My result

